

G
Mariner Blue



Bean's Blue Jean Sweaters

E-G. Soft, casual sweaters in rich solid colors that will look great with your favorite jeans. Their clean styling and roomy fit make them a natural choice for comfort. Knit from 100% cotton in a versatile year-round weight. Imported. Machine wash, dry flat. **Colors** Regular: Shown below and at right. Tall: Mariner Blue. Pine. Navy.

Sizes Regular S, M, L, XL, XXL. Tall L to XXL.

E. CREWNECK
GW55794 REG \$36.50 TALL \$41.50

F. BUTTON MOCK-TURTLENECK
GW55935 REG \$39.50 TALL \$44.50

G. ZIP-CARDIGAN
GW55795 REG \$41.50 TALL \$45.50

New Khaki

Mariner Blue



REFINE YOUR SEARCH

Shop by price, color or style to find the item that's right for you.

ilbean.com

men's sweaters [GO](#)



E
Dark
Plum

F
Pine

G
Navy

Shop anytime at ilbean.com or 800-221-4221

A, B

Ash

Camp Green

Navy

Atlantic Blue

Mountain Red

Rust Heather

Deep Brown

Dark Plum

Black

B
Dark
Plum

A
Atlantic
Blue

Fitness
Fleece
starting at

\$19⁹⁵

Bean's Fitness Fleece

NOW EVEN BETTER—with updated styling

A, B. These exceptionally soft polyester-fleece layers will keep you warm during walks, jogs and everyday excursions—and they're offered at unbeatable prices. Pill-resistant fabric stays soft and smooth through repeated washings. Zip chest pocket. Locking rubber zipper pulls. Imported. Machine wash and dry. **Colors** Regular: Shown at left. Tall: Camp Green. Navy. Mountain Red. Black.

Sizes Regular S, M, L, XL, XXL. Tall M to XXL.

A. QUARTER-ZIP PULLOVER GW59032 REG \$24.95 TALL \$29.95

B. **new** CREW GW59031 REG \$19.95 TALL \$24.95

Sign up for EMAIL UPDATES

Be the first to know about:

- Sales and special offers
- Online and in-store events
- Store openings near you
- Exciting new products

 lbean.com/updates



Carefree Unshrinkable Shirts

C-E. No matter how hard we try, we just can't stain, wrinkle, shrink or fade these shirts. They've been tested in our lab and in the field—essentially, put through the wringer—to make sure they live up to their name without sacrificing comfort. The carefree fabric treatment retains the feel of the soft, durable ring-spun cotton, and the fit is designed to be comfortable for all-day wear. Soft jersey-knit taping on the neck seam. Straight hem. Durable double-needle stitching. 6 oz. jersey-knit fabric. Imported. Machine wash and dry. **Colors** Regular: Shown above. Tall: Black. Gray Heather. Navy. Deep Red. White.

Sizes Regular S, M, L, XL, XXL. Tall M to XXL.

C. SHORT-SLEEVE T-SHIRTS

WITH POCKET
GW49855 REG \$12.95 TALL \$17.95

WITHOUT POCKET
GW49835 REG \$12.95 TALL \$17.95

D. LONG-SLEEVE T-SHIRTS

WITH POCKET
GW49864 REG \$16.95 TALL \$21.95

WITHOUT POCKET
GW49862 REG \$16.95 TALL \$21.95

E. HENLEYS

SHORT-SLEEVE
GW49870 REG \$16.95 TALL \$21.95

LONG-SLEEVE
GW51050 REG \$20.95 TALL \$25.95





Holiday Flannel Pants and Boxers

B. Comfortable flannel sleepwear—all wrapped up and ready for giving. Pants come in six holiday pattern favorites and arrive in a matching fabric bag with gift tag. Boxers come in two to a bag that's constructed using both boxer patterns; choose from three pairings. Functional fly flap. Pants are an easy pull-on style with drawstring waist and on-seam pockets. 100% cotton. Imported. Machine wash and dry. **Colors** Pants: Dark Green Plaid, Royal Stewart, Navy Ski Tags, Blue Winter Sporting, Burgundy Plaid, Black Watch Plaid. Boxers: Royal Stewart/Black Watch Tartan, Blue Winter Sporting/Navy Ski Tags, Burgundy/Dark Green Buffalo Plaid.

Sizes S, M, L, XL, XXL.

PANTS GW55952 \$29.50
new BOXERS GW59600 \$29.50



Allagash Bison Leather Belt

C. The exceptional beauty and softness of bison hide have made it the leather of choice for centuries. And as soft as it is, it's also surprisingly durable. Rugged brass buckle. Approx. 1 1/4" W. USA. **Colors** Raisin. Black.

GW56028 \$39.50

new Essential Web Belt

D. Fun, bright colors add to the appeal of this timeless casual style. Full-grain-leather tabs and a brushed-silver buckle. Polyester viscose/elastodiene webbing with a hint of stretch. 1 1/2" wide. USA.

Colors Shown at left and below.

GW58412 \$29.95



Orange/White Blue/White Khaki/Navy Olive

Merino Wool-Blend Ragg Socks Gift Set

E. Beautifully packaged for gift giving, our thick ragg socks are well-known for their exceptional warmth. Knit from premium, itch-free Australian merino wool and nylon/Lycra® elastane for durability and stretch. Three-piece set includes one pair each in Forest, Gray and Charcoal. 100% USA (wool imported). Machine wash, line dry.

Sizes M 5-9, L 9-12, XL 12-15.

GW56031 \$25.95





Make any day a little
more comfortable

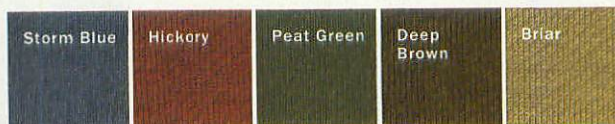
Bean's Saturday Sweats

NOW EVEN BETTER—with new styles and a soft waffle lining throughout

F-I. This season, we've updated our beefy sweats to make them even more comfortable for weekend wear, whether you're lounging around the house or out for a walk around town. Made of a 9.5 oz. cotton-blend fabric, the tops are now lined in a soft waffle knit. The pants have a soft cotton waffle-knit lining inside the waistband. Prewashed for a broken-in look and feel. Full-Zip and Quarter-Zip feature rugged brass zipper. Quarter-Zip has two side-seam handwarmer pockets. Pants have a comfortable elastic waist with drawstring, two front pockets and a straight fit. 88% cotton/12% polyester. Imported. Machine wash and dry. **Colors** Tops: Regular: Storm Blue. Hickory. Peat Green. Deep Brown. Briar. Tall: Storm Blue. Peat Green. Pants: Storm Blue. Peat Green. Deep Brown.

Sizes Tops: Regular S, M, L, XL, XXL. Tall L to XXL.
Pants: Regular S, M, L, XL, XXL.

F. **new** FULL-ZIP GW59174 REG \$54 TALL \$59
G. LINED HOODIE GW56978 REG \$54 TALL \$59
H. **new** QUARTER-ZIP GW59176 REG \$49 TALL \$54
I. PANTS GW59178 \$39.50





Trail Model Fleece Accessories

A-E. For Men and Women Soft, warm outdoor accessories, made of ecofriendly Polartec® Forward Fabric for outstanding warmth and breathability without a lot of weight. Imported, polyester fabric USA. Machine wash and dry. **Colors** Earband and Scarf: Meadow Violet. Otter Brown. Navy. Black. Larkspur. Charcoal Gray Heather. Women's Gloves and Mittens: Meadow Violet. Otter Brown. Black. Larkspur. Men's Gloves: Navy. Black. Charcoal Gray Heather.

Sizes Earband and Scarf: One size fits all. Women's Mittens and Gloves: S, M, L. Men's Gloves: S, M, L, XL.

- A. MEN'S AND WOMEN'S EARBAND GW57582 \$15
- B. MEN'S AND WOMEN'S SCARF GW51436 \$19.50
- C. WOMEN'S MITTENS GW51538 \$15
- D. WOMEN'S GLOVES GW51504 \$15
- E. MEN'S GLOVES GW51537 \$15



Wool Knit Hats

F. For Men and Women A great way to stay warm during your favorite winter activities. Made of soft, breathable wool that insulates even when damp. Lined with polyester microfleece inside the band for no-itch comfort against your forehead. Imported. Handwash, line dry. **Patterns** Women's: Crystal Blue. Tidal Blue. Radiant Red. Chocolate. Men's: Forest Moss. Deep Red. Black. Bright Blue.

Size One size fits all.

WOMEN'S GW54011 \$25 MEN'S GW59643 \$25



just add accessories for instant

Bean's Double-Layer Underwear

G-J. For Men and Women Two-layer construction insulates without adding bulk and defies winter's cold. The outer layer is a cotton/wool/nylon blend for exceptional warmth, while the inner layer is soft, absorbent, itch-free cotton for next-to-skin softness. Made in Canada. Machine wash and dry.

Men's colors Union Suit: Red. Charcoal (view online). Crew and Pants: Light Gray. Navy (view online). **Sizes** Regular S, M, L, XL. Tall L to XXL.

	REG	TALL
G. UNION SUIT	GW53691 \$49	\$54
H. CREW	GW48522 \$24.95	\$29.95
I. PANTS	GW48523 \$24.95	\$29.95

Women's colors Crew and Pants: Berry Pink Heather. View online: Winter White. Lake Heather. Lavender Heather. Union Suit: Red. Berry Pink Heather. **Sizes** S, M, L, XL.

H. CREW	GW35679 \$24.95
I. PANTS	GW35680 \$24.95
J. UNION SUIT	GW53735 \$49

Catalog and llbean.com only



new Gore-Tex Insulated Gloves and Mittens

K, L. For Men and Women Designed with all the best features of premium Gore-Tex® ski gloves and mittens at an affordable price. Full-length gauntlet has a bungee closure to seal out snow. Wrist straps adjust to give you the best fit. Rugged nylon shell is extremely abrasion and water resistant. Backed with a waterproof, breathable Gore-Tex insert that's a sure barrier against moisture. Warm Thinsulate™ Insulation polyester and a moisture-wicking lining protect your fingers from cold. Imported. Spot clean.

Sizes Men's: S, M, L, XL.
Women's: S, M, L.

MEN'S

K. GLOVES GW59547 \$39
L. MITTENS GW59548 \$39

WOMEN'S

K. GLOVES GW59549 \$39
L. MITTENS GW59550 \$39



K
Black

L
Black



M
Red



N
Hickory



O
Red/Black
Buffalo Plaid

Mad Bomber® Hats

M-O. For Men and Women Our warmest hat and a customer favorite for years. Shell is fully insulated and trimmed with plush rabbit fur. Wear it with earflaps up, or pull them down for added warmth. Imported. Spot clean. **Colors** Nylon shell: Red. Black. White. Olive. Khaki. Leather: Hickory. Wool/Nylon shell: Red/Black Buffalo Plaid.

Sizes S, M, L, XL.

M. Nylon Shell Rugged Supplex® nylon fabric is durable and lightweight. **GW39504 \$39.50**

N. new Leather Supple full-grain leather with snap-closure ear flaps. **GW59347 \$69**

O. Wool/Nylon Shell Warm 85% wool/15% nylon fabric. **GW51456 \$39.50**

Black

White

Olive

Khaki

warmth

and even more at llbean.com—search **winter accessories**



MEN'S

Silk Underwear

P-U. For Men and Women The ideal first layer. Strong, lightweight silk offers warmth and comfort without added bulk. Great for active or casual wear. Approx. 2.2 oz. Imported. Machine wash, line dry.

Men's colors Navy. Natural. Black (view online) in Turtleneck only.

Sizes Shirts: Regular S, M, L, XL. Tall (Turtleneck) L, XL.
Pants: S, M, L, XL.

P. CREWNECK GW48158 \$32
Q. TURTLENECK GW48166 REG \$35 TALL \$39
R. PANTS GW48160 \$32

Women's colors Surf Blue. Cream. Black (view online).

Sizes Misses' XS, S, M, L, XL. **W** Women's IX, 2X, 3X.

S. SCOOPNECK GW35706 MISSES' \$26 W'S \$29
T. TURTLENECK GW10596 MISSES' \$32 W'S \$35
U. PANTS GW11071 MISSES' \$26 W'S \$29

Women's: catalog and llbean.com only

WOMEN'S



S
Surf Blue

U
Cream

T
Cream

MEN'S

ark Royal Blue

noe Green

vy

rgundy

arcoal Gray Heather

ack

OMEN'S

eadow Violet

rkspur

ft Teal

y Pond

ter Brown

avy

ack



SAME GREAT PRICE SINCE 1999

Bean's Trail Model Fleece Outerwear

A-G. For Men and Women Our best-value fleece is made of soft, breathable Polartec® Forward Fabric, composed of up to 85% recycled fibers. The soft polyester fabric is lighter and more breathable than the competition's, yet faster drying and every bit as warm. Pullover has a quarter-length snap closure. Imported, fabric USA. Machine wash and dry. **Colors** Shown at left.

Men's sizes: Regular S, M, L, XL, XXL. Tall L to XXL.

		REG	TALL
A. VEST	GW35041	\$29.95	\$34.95
B. JACKET	GW23853	\$49.95	\$54.95
C. PULLOVER	GW55413	\$39.95	\$44.95

Women's fit Slightly fitted · Best with lightweight layer. **Sizes** Misses' Petite (Drawcord Jacket) and Regular S, M, L, XL. **W** Women's Regular 1X, 2X, 3X

		MISSSES'	WOME
D. VEST	GW35676	\$29.95	\$34.95
E. DRAWCORD JACKET	GW51302	\$59.95	\$64.95
F. JACKET	GW55415	\$49.95	\$54.95
G. PULLOVER	GW55414	\$39.95	\$44.95

Pullover: catalog and lbean.com only

Find more—search
Bean Values at lbean.com.



MEN'S



WOMEN'S



COMPARE FLEECE ONLINE

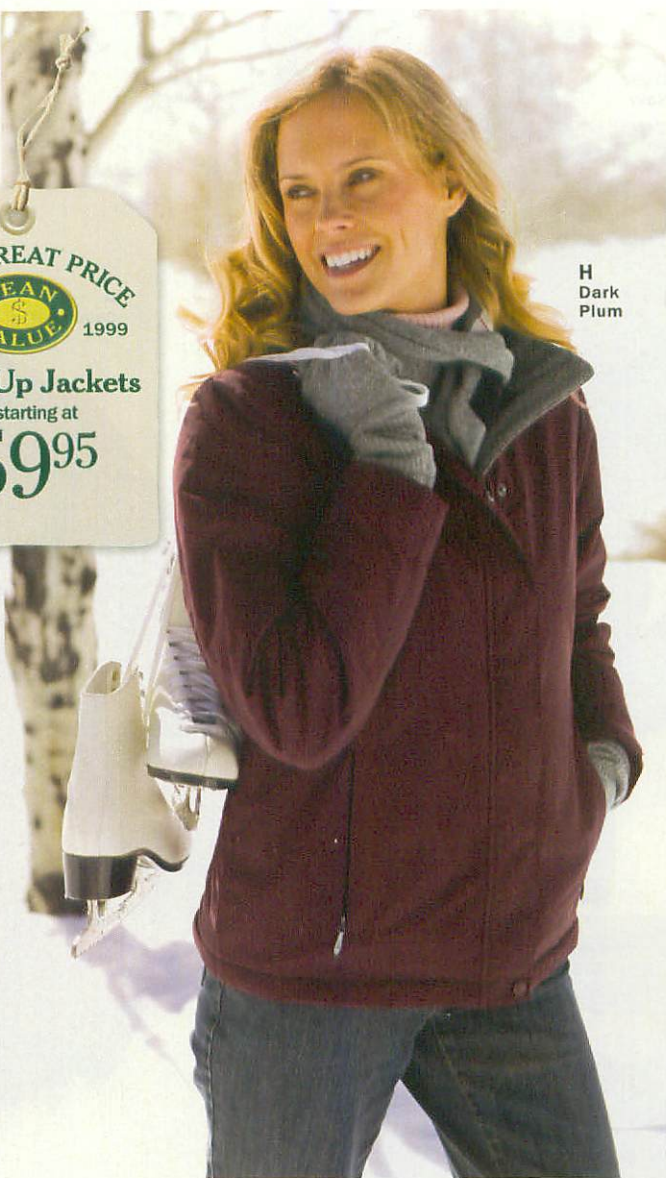
Watch our fleece video to learn more about which fleece is right for you.

lbean.com [fleece video](#) [GO](#)

H
Navy



H
Dark
Plum



“A great jacket for all kinds of weather at a great price.”

lbean.com customer, Westminster, MD

SAME PRICE



SINCE 1999

Warm-Up Jackets

H. **comfort range 25°F/-15°F** For Men and Women Top-quality construction and premium fabrics make these jackets a dependable choice season after season. The rugged nylon shell has a durable, highly water-resistant treatment that protects you from rain and wind. Lined with soft, warm 300-weight polyester fleece in body and collar. Sleeves are lined with smooth nylon taffeta for easy on/off and insulated with Thinsulate™ Insulation polyester for warmth without bulk. Two fleece-lined pockets outside and one easy-access pocket inside keep your gear secure. Imported. Machine wash and dry. **Colors** Shown below

Men's sizes Men's Regular S, M, L, XL, XXL. Tall L to XXL.

GW43353 REG \$59.95 TALL \$69.95

Women's fit Relaxed · Best with midweight layer · Falls at hip.

Sizes Misses' XS, S, M, L, XL. **W** Women's 1X, 2X, 3X.

GW10875 MISSES' \$59.95 W'S \$69.95

Women's: catalog and lbean.com only

Find more—search
Bean Values at lbean.com.

Thinsulate™
INSULATION

MEN'S
Warden's
Green

Burgundy

Navy

Ash Bark

Moss Khaki

Mariner Blue

MEN'S/
WOMEN'S
Black

WOMEN'S
Mallard Teal

Night

Dark Plum

Deep
Raspberry

True
Navy



A
Colonial Red



Storm Chaser
3-in-1
Outerwear
starting at
\$89

French
Blue



Storm Chaser 3-in-1 Jacket

A. **comfort range 20°F/-15°F** For Men and Women

A great value, this versatile and comfortable jacket can be worn three ways to seal out cold, wet and wind. Rugged nylon shell has a durable water-resistant coating that sheds rain, sleet and snow. Removable liner is made of soft, substantial 200-weight polyester fleece. Wear them together in the worst weather for a warm, dry outerwear system. Shell has a stowaway hood and a secure inside pocket for your cell phone or handheld radio. Two

zip pockets on shell, two on liner. Imported. Machine wash and dry. **Colors** Shown below.

Men's sizes Regular S, M, L, XL, XXL. Tall L to XXL.

GW50574 REG \$89 TALL \$99

Women's fit Relaxed · Best with lightweight layer. **Sizes** S, M, L, XL.

GW50573 \$89

Learn more about comfort ratings when you shop our products at lbean.com/outerwear.

MEN'S



MEN'S/ WOMEN'S



WOMEN'S

