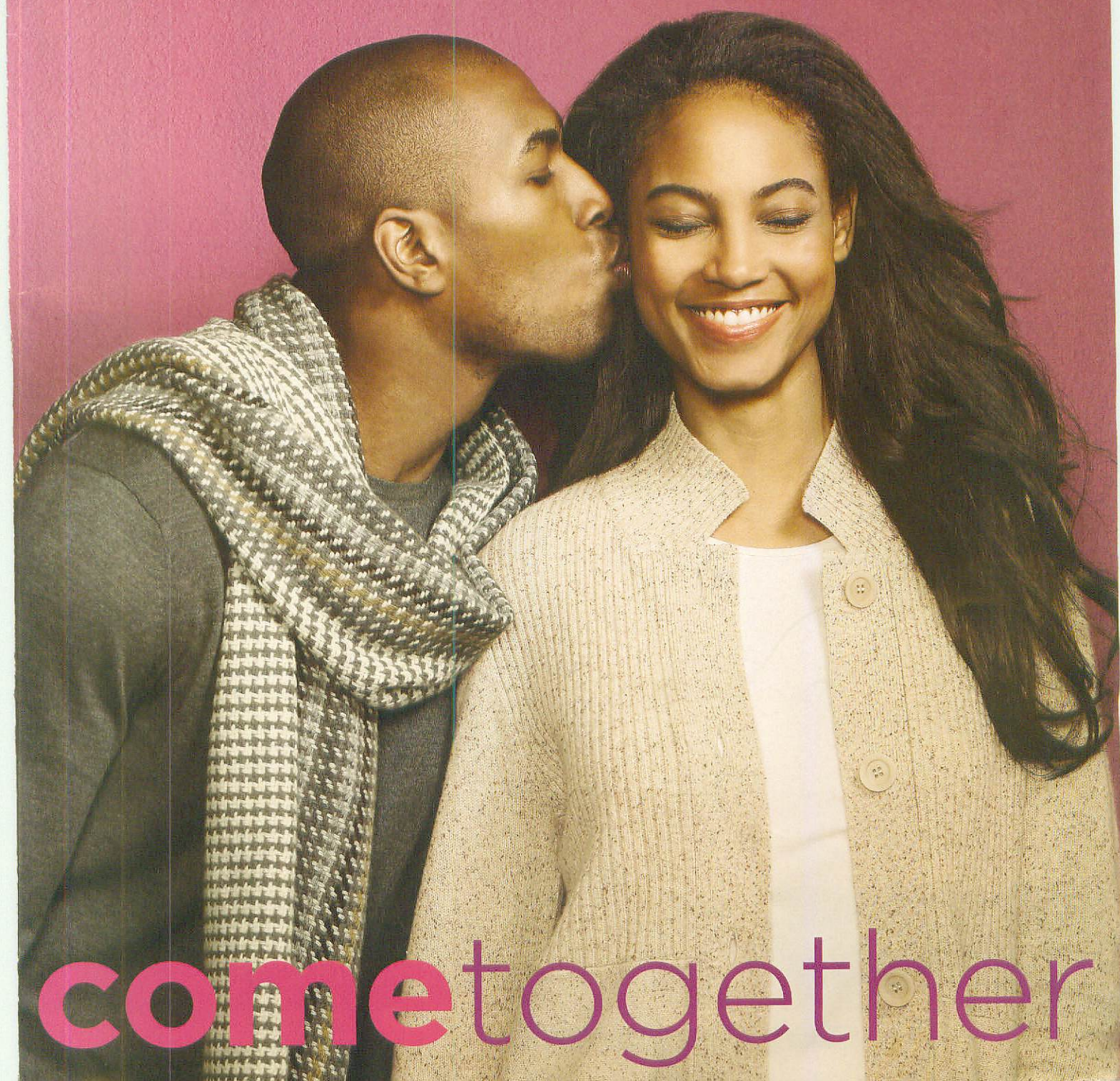


Neiman Marcus

BY MAIL • ONLINE



come together



**EILEEN FISHER.** Red lightweight silk and cotton knit stand-collar button-front jacket with long sleeves (shown pushed up) worn over a matching jewel-neck shell. Black washable stretch crepe wide-leg easy pants of viscose, nylon, and Lycra®. All, Missy sizes XS(2-4), S(6-8), M(10-12), L(14-16), XL(18), Petite sizes PP(2P-4P), PS(6P-8P), PM(10P-12P), PL(14P-16P), and Women's sizes 1X(14W-16W), 2X(18W-20W), 3X(22W-24W). Jacket and shell, imported. Pants, made in the USA of imported material.

2A Missy Jacket 298.00  
2B Missy Shell 118.00  
2C Missy Pants 168.00  
2D Petite Jacket 298.00  
2E Petite Shell 118.00  
2F Petite Pants 168.00  
2G Women's Jacket 318.00  
2H Women's Shell 128.00  
2J Women's Pants 178.00

**BEREK.** Our "Jungle Society" mesh cardigan and shell is a mix of brown animal prints. Scoop-neck three-quarter-sleeve cardigan with hook-and-eye closure and opaque faux-stone embellishment worn over a matching easy-fitting shell. Imported of polyester and spandex for Missy sizes S(4-6), M(8-10), L(12), XL(14-16), Petite sizes PXS(4P), PS(6P-8P), PM(8P-10P), PL(12P-14P), and Women's sizes 1X(16W), 2X(18W), 3X(20W).

3A Missy Cardigan 150.00  
3B Missy Shell 70.00  
3C Petite Cardigan 150.00  
3D Petite Shell 70.00  
3E Women's Cardigan 160.00  
3F Women's Shell 80.00

For apparel on these pages, see our Classic, Petite, and Women's Sizes Fit Guides.







**come**together

for an altogether  
fabulous season

3A-F



**JOSÉ & MARIA BARRERA.** Gorgeous

accessories of faceted and polished turquoise and 24-kt. yellow gold plate. Hammered hinged cuff, 2 $\frac{3}{16}$ " Dia. Turquoise and Austrian crystal chandelier clip-on earrings, 2 $\frac{3}{16}$ " L x 1 $\frac{1}{2}$ " W. Turquoise and Austrian crystal hammered teardrop clip-on earrings, 31 L x 1 $\frac{1}{8}$ " W. Multi-strand turquoise and glass bead necklace, 17" L with 3" extender. All, made in the USA.

**4A Cuff** 365.00

**4B Chandelier Earrings** 275.00

**4C Teardrop Earrings** 315.00

**4D Necklace** 715.00



**LONGCHAMP'S TRAVEL BAGS.** These Le

Pliage® travel bags of lightweight polyamide canvas with leather trim are available in your choice of three great colors. What's more, they fold up for easy storage. Specify Howthorne (dusty rose), Thistle (blue-gray), or Bilberry (purple). Duffel, 15 $\frac{1}{2}$ " H x 21 $\frac{1}{4}$ " W x 9" D. Tote, 13 $\frac{1}{4}$ " H x 13 $\frac{1}{4}$ " W x 7 $\frac{1}{2}$ " D. Imported.

**4E Duffel** 155.00

**4F Tote** 145.00





**EILEEN FISHER.** Merino wool and nylon stand-collar jacket with button front. Specify Parsley, Mocha, or Lake. Chocolate silk knit crew-neck top with long sleeves and matching straight-leg knit jeans of rayon, nylon, and spandex. All, imported for Missy sizes XS(2-4), S(6-8), M(10-12), L(14-16), XL(18); Petite sizes PP(2P-4P), PS(6P-8P), PM(10P-12P), PL(14P-16P); Women's sizes 1X(14W-16W), 2X(18W-20W), 3X(22W-24W).

5A Missy Jacket 258.00

5B Missy Top 98.00

5C Missy Knit Jeans 148.00

5D Petite Jacket 258.00

5E Petite Top 98.00

5F Petite Knit Jeans 148.00

5G Women's Jacket 278.00

5H Women's Top 118.00

5J Women's Knit Jeans 168.00

See our Classic, Petite, and Women's Sizes Fit Guides.





6A-F





**JOAN VASS.** Zip-up jacket of cotton and polyester velour with convertible collar and kangaroo pockets over matching easy pants. Scoop-neck tank of soft cotton knit has golden piping at the neckline. For all, specify Venetian Red, Majestic Plum, Dark Brown, or Black. Imported for Missy sizes 0(4), 1(6-8), 2(10-12), 3(14-16); Women's sizes 1X(14W-16W), 2X(18W-20W), 3X(22W-24W).

**6A** Missy Jacket 168.00

**6B** Missy Tank 68.00

**6C** Missy Pants 148.00

**6D** Women's Jacket 188.00

**6E** Women's Tank 78.00

**6F** Women's Pants 158.00

**NM EXCLUSIVE.** Black open-front jacket with multicolored and metallic silver brocade trim over a short-sleeve tee and flat-front pants with side zip. Imported of polyester, rayon, and spandex for sizes S(4-6), M(8-10), L(12-14), XL(16).

**7** Three-Piece Set 325.00

For apparel on these pages, see our Classic and Women's Sizes Fit Guides.



**WHITE + WARREN.** Pure cashmere separates in eight vivid colors. Drape-neck open-front long cardigan with long sleeves and V-neck sweater with long sleeves. Specify Red, Baby Pink, Sage Green, Cream Heather, Light Gray, Black, Navy Heather, or Mustard Yellow. Imported for sizes S(4-6), M(8-10), L(12-14), XL(16).

**8A Cardigan**

**Special Value 150.00**

**8B Sweater**

**Special Value 150.00**

See our Modern Sizes Fit Guide.

For watch, see page 32. For Juicy boot, see page 14.

**GO SILK.** Top off your look with this easy-fitting puckered blouse of cotton and spandex with faceted jet black buttons, three-quarter sleeves, and ruched cuffs. Specify Red or Black. Imported for Missy sizes XS(0-2), S(4-6), M(8-10), L(12-14), XL(14-16), Petite sizes PP(0P-2P), PS(4P-6P), PM(8P-10P), PL(12P-14P), and Women's sizes 1X(16W-18W), 2X(20W-22W), 3X(24W).

**9A Missy Blouse 135.00**

**9B Petite Blouse 135.00**

**9C Women's Blouse 145.00**

See our Classic, Petite, and Women's Sizes Fit Guides.







9A-C



10A 10B



**LAUREN MERKIN CLUTCH.** "Louise" crocodile-embossed Italian calf leather clutch. Specify Wine or Black. 7"H x 14"W x 1/2"D. Made in the USA.

10A Clutch 200.00

**STACKABLE JEWELRY BOXES.** Stackable jewelry boxes are covered in faux leather. Specify Pink, Purple, Green, or Turquoise. Fabric-lined interior is divided into five compartments. Each box, 2 1/4"H x 10"W x 8"D.

10B Each Jewelry Box valued at 45.00  
Special Value 34.90

**MARLYN SCHIFF BRACELET.** Goldtone stretch bracelets with colorful enamel detail. 2 3/4"Dia. In your choice of Olive, Wine (an NM exclusive), Montana Blue, or Black. Made in the USA of imported and domestic material.

10C Olive Stretch Bracelet 50.00  
10D Wine Stretch Bracelet 50.00  
10E Montana Blue Stretch Bracelet 50.00  
10F Black Stretch Bracelet 50.00

**CAMERA CASES.** Coin purse-style camera cases in a rainbow of hues are handcrafted in Germany of vegetable-tanned deer leather and hand-polished metal. Specify Red, Orange, Pink, Lime, or Turquoise. Fully lined interior has pockets for batteries. 4"H x 6"W x 2"D.

10G Each Camera Case 128.00



10C-F



10G



great  
gifts

fabfinds