

L.L.Bean

SINCE 1912 | FALL 2009

Lasting quality, same great price
Look for BEAN VALUES throughout this catalog

PAGE 2 FOR DETAILS



Warm Up with Fleece-Lined
Hoodies for Men, Women and Kids

see pages 6-7

FREE
shipping

no minimum purchase

See inside for details

LLBEAN.COM | FAST, RELIABLE DELIVERY



Lasting quality, same great price

"Sell good merchandise at a reasonable profit, treat your customers like human beings, and they will always come back for more."

That was Leon Leonwood Bean's golden rule. It was the foundation of our business philosophy then, and we still live by it today. At L.L.Bean, we believe value is much more than just a low price.

Throughout this catalog, you'll find a collection of products that we call "Bean Values." These items—many of them perennial customer favorites—haven't gone up in price in years, and their quality hasn't gone down. And when you shop with L.L.Bean, the value doesn't end with the transaction. Our legendary guarantee ensures that you will be completely satisfied with your purchase—you have our word.

3 WAYS TO SHOP

lbean.com | 800-221-4221 | Retail Stores

We guarantee the prices in this catalog through January 1, 2010.

CUSTOMER REVIEWS

Check out our Customer Reviews at lbean.com. You can log on and read what our customers have to say about our products, and you can share your own stories.

NEW AND IMPROVED PRODUCTS

We are always looking for ways to make our products better. Many of our products have been updated this year—from new fabrics and features to innovative designs.

GUARANTEED You Have Our Word®

Our products are guaranteed to give 100% satisfaction in every way. Return anything purchased from us at any time if it proves otherwise. We do not want you to have anything from L.L.Bean that is not completely satisfactory.

a burst of
autumn
color,
all
under \$20

Bean Canteen

NOW EVEN BETTER—new user-friendly sport top makes it easy to drink on the go

This reusable, recyclable bottle is made of superdurable, food-grade stainless steel, so water comes out tasting fresh and clean every time. Fits most car cup holders. Opening is wide enough for most ice cubes and cleaning brushes. Dishwasher safe. Engravable. Imported. **Colors** Shown opposite.

Dimensions 18 oz.: 7"H x 2 1/4" diam. 6 oz.
27 oz.: 10 1/2"H x 2 1/4" diam. 8 oz.

M SOLID GG57563 18 OZ. \$16.95 27 OZ. \$18.95
PRINT GG57697 18 OZ. \$19.95

View our new Wide-Mouth Bean Canteen online at lbean.com

M MONOGRAMMABLE | see order form for details

Nightfinder II Travel Alarm Clock

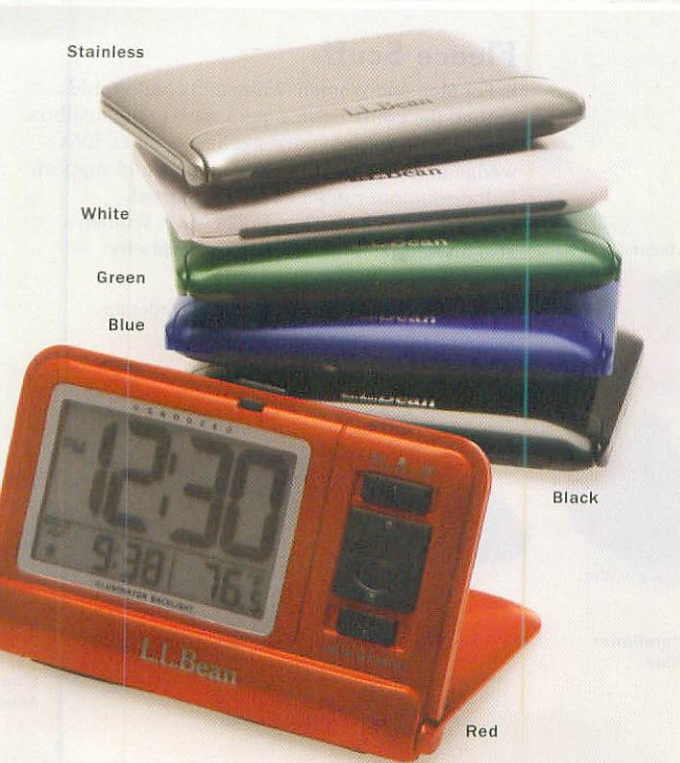
Our lightweight, easy-to-set alarm clock features a high-impact case that doubles as a handy stand. Widescreen display illuminates for night viewing. Alarm has snooze function. Indicates temperature in Celsius or Fahrenheit. Polycarbonate resin with metallic finish. Batteries included. 3 1/4" x 4 1/4". Imported. **Colors** Shown opposite.

GG48471 \$19.95

L.L.Bean Crank LED Mini-Flashlight

Fits in the palm of your hand. One minute of cranking provides about 20 minutes of light. 3 3/4" L x 1 1/2" H x 2" W. 3 oz. Imported. **Colors** Shown opposite.

GG57378 \$14.95 BUY 3 OR MORE FOR \$12 EACH



A



Lily Pond

Colonial Red

Bright Navy

Blue Mist

Tan

Crystal Pink

Shearling Flip-Flops

NOW EVEN BETTER—with more flexible straps and a low-profile indoor/outdoor outsole

A. For Women Our genuine shearling slippers cradle your feet in soft, moisture-wicking comfort. Water- and stain-resistant suede upper comes in your choice of fun colors. Cushioning foam footbed. Flexible indoor/outdoor rubber outsole. Imported.

Colors Shown at left.

Whole sizes Medium B 5 to 11. Half sizes order *up*.
GG59022 \$39.50

new Primrose Slippers

B. For Women Stow these feminine slippers by the front door or toss into your overnight bag for any time you need "inside shoes". Made of soft, stretchy polyester microfleece with an elastic collar. Lightly padded footbed. Fabric-wrapped outsole. Imported.

Colors Shown at left.

Whole sizes Medium B 5 to 11. Half sizes order *down*.
GG59026 \$24.95

B



Blue Aster

Bright Navy

Foliage

Sea Rose

Cream

Hearthside Slippers

C, D. For Women Sink your feet into these cozy fleece-lined slippers at the end of a long day and feel instantly pampered. Soft suede upper and foam-padded insole mold to your foot for extra cushioning and comfort. Light, flexible rubber outsole helps provide traction. Contrast-color lacing. Imported.

Colors Shown at left.

Whole sizes Medium B 5 to 11. Half sizes order *up*.

C. MOCCASIN GG55800 \$34.95

D. new SCUFF GG56833 \$29.95

Fleece Scuffs

E. For Men and Women Warm and comfortable around the house or on a quick dash to the mailbox. Two-hundred-weight polyester-fleece upper. EVA wedge in the midsole adds cushioning and support. Indoor/outdoor rubber outsole. Imported.

Colors Charcoal Heather. Bright Navy. Women's also in: Natural. Blue Aster. Deep Raspberry.

Whole sizes Men's Medium D 7 to 13.
Women's Medium B 5 to 11. Half sizes order *up*.

MEN'S GG59038 \$29.95

WOMEN'S GG59037 \$29.95



D

Deep Red

Burnt Sienna

Wood Violet

Cornflower Blue

Natural

Chocolate

Green Tea

Charcoal Heather

Bright Navy

E

Natural

Deep Raspberry

Blue Aster

“The warmest slippers I’ve ever had.”



Ilbean.com customer, Rochester, NY. Read more customer reviews online.



Bean's Wicked Good® Slippers

F-J. For Men and Women Here in Maine, “wicked good” is as good as you can get. When you slip into these soft shearling slippers, you’ll understand exactly how they earned their name. Unlike similar-looking imitations, our slippers are made of superior sheepskin. Known as one of nature’s best insulators, shearling draws away moisture so your feet stay warm on chilly winter mornings. Best of all, the shearling wraps completely around your foot so you feel nothing but soft, warm fleece against your skin. All styles except Slipper have indoor/outdoor sole. Imported.

Colors Brown. Chocolate Brown. Women’s Scuffs and Moccasins also in: Natural. Cobalt Stone. Fuchsia. Vintage Red. Classic Green.

IN WIDE WIDTHS Whole sizes Men’s Medium D, Wide EE (Slipper, Moccasin) 7 to 13. Women’s Medium B 5 to 11. Half sizes order up.

MEN’S

F. SLIPPER GG36107 \$49.95
G. SCUFF GG57346 \$49.95
H. MOCCASIN GG36124 \$49.95

WOMEN’S

F. SLIPPER GG46328 \$49.95
I. SCUFF GG57347 \$49.95
J. MOCCASIN GG36128 \$49.95

WOMEN’S



J Natural

I Cobalt Stone

Fuchsia

Vintage Red

Classic Green

A
Timber



Katahdin Iron Works® Heavyweight Sweatshirt

A. For Men On the job site or around the yard, this rugged, heavyweight zip-front sweatshirt will stand strong for years of hard use. The comfortable cotton-jersey fabric has a soft polyester berber-fleece lining for warmth. Underarm gussets for added mobility.

Specially designed hood fits well even over a baseball cap. Both front pockets have hidden security pockets with Velcro®-closure. Imported. Machine wash and dry.

Colors Barley. Black Spruce. Timber. Navy. Gray Heather.

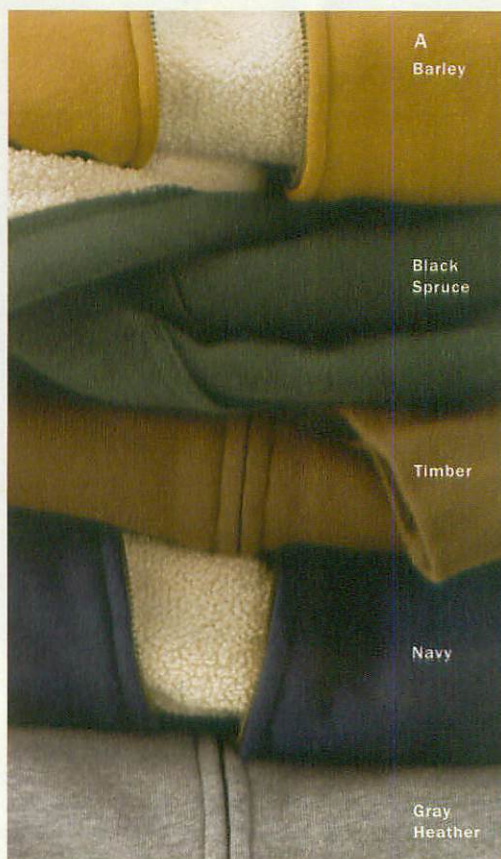
Sizes Regular XS, S, M, L, XL, XXL. Tall L to XXL.

GG55561 REG \$49.95 TALL \$54.95



llbean.com

see close-ups of details online



A
Barley

Black
Spruce

Timber

Navy

Gray
Heather

B



Boys' Fleece-Lined Camp Hoodie

B. It's hard to decide which is softer—the velvety cotton/polyester french terry outside or the plush polyester fur fleece inside. Durable contrast coverlock stitching will stand up to constant use. Full-coverage hood. Relaxed fit. Imported. Machine wash and dry. **Colors** Shown at left. Logo: Gray Heather.

Sizes Little Boys' S 4, M 5-6, L 6X-7.
Boys' S 8, M 10-12, L 14-16, XL 18.

GG55494 SOLID \$34.50 LOGO \$39.50

Bean's Fleece-Lined Hoodie

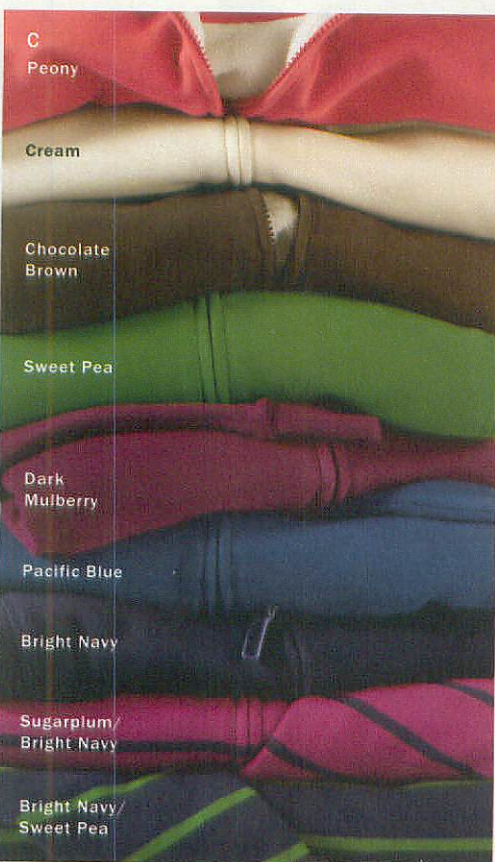
C. For Women You'll feel more relaxed from the moment you slip on this cozy, comfortable layer—now with an even roomier fit for exceptional ease. The hood and body are lined with plush polyester fleece for extra warmth you'll appreciate in every season. Smooth cotton/polyester shell is brushed for softness, then finished with tonal coverstitching and pretty velvet-trim details. Princess seams give it a feminine look and feel. Zip front, on-seam pockets. Cotton-lined sleeves. Imported. Machine wash and dry. **Fit** Relaxed · Falls at hip. **Colors** Misses': Shown below. Women's: Cream. Chocolate Brown. Sweet Pea. Dark Mulberry. Pacific Blue. Sugarplum/Bright Navy. Bright Navy/Sweet Pea.

Sizes Misses' XS, S, M, L, XL. **W** Women's 1X, 2X, 3X.

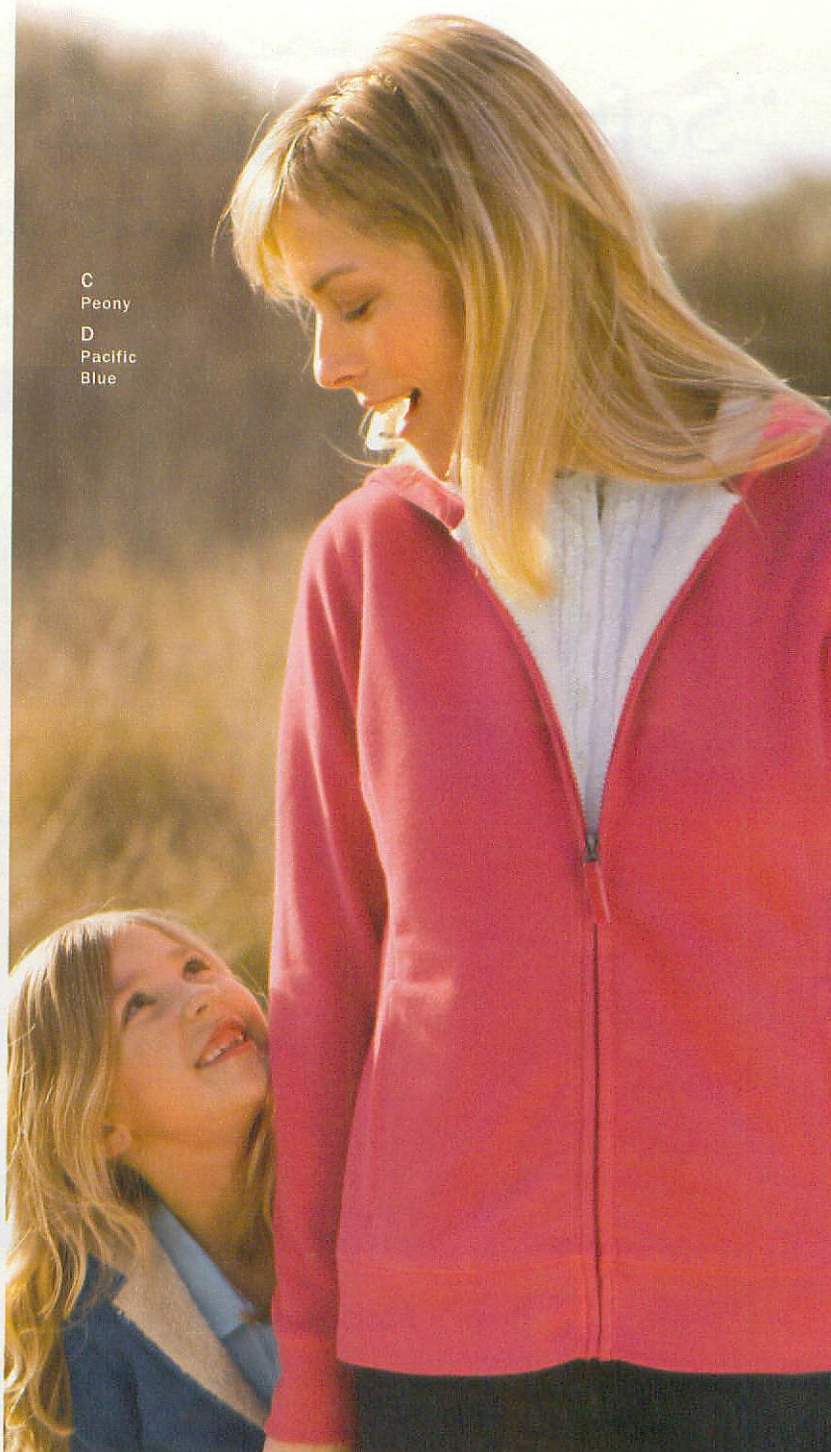
GG57466

SOLID MISSES' \$49.95 W'S \$54.95

new STRIPE MISSES' \$54.95 W'S \$59.95



C
Peony
D
Pacific
Blue



new Girls' Fleece-Lined Camp Hoodie

D. Now in a new silhouette for girls—longer and shaped with princess seams for a flattering fit. Velvety soft cotton/polyester french terry outside, plush polyester fur fleece inside. Durable coverlock stitching. Imported. Machine wash and dry. **Colors** Shown at right.

Sizes Little Girls' S 4, M 5-6, L 6X-7. Girls' S 8, M 10-12, L 14-16, XL 18.

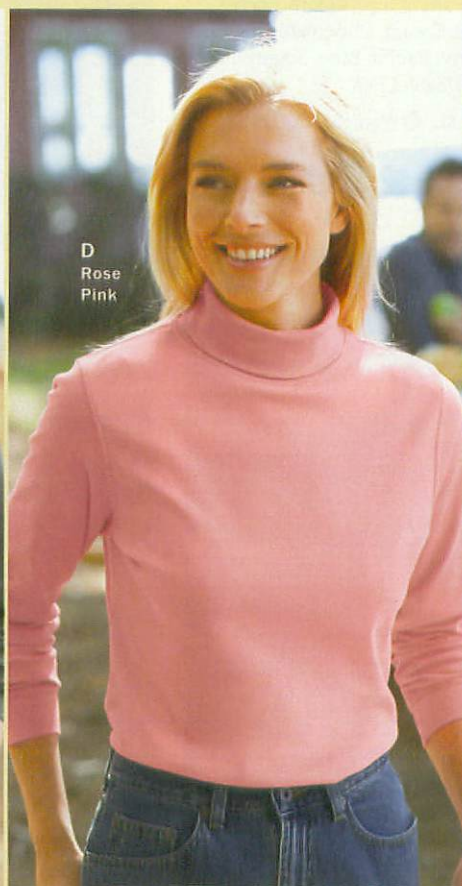
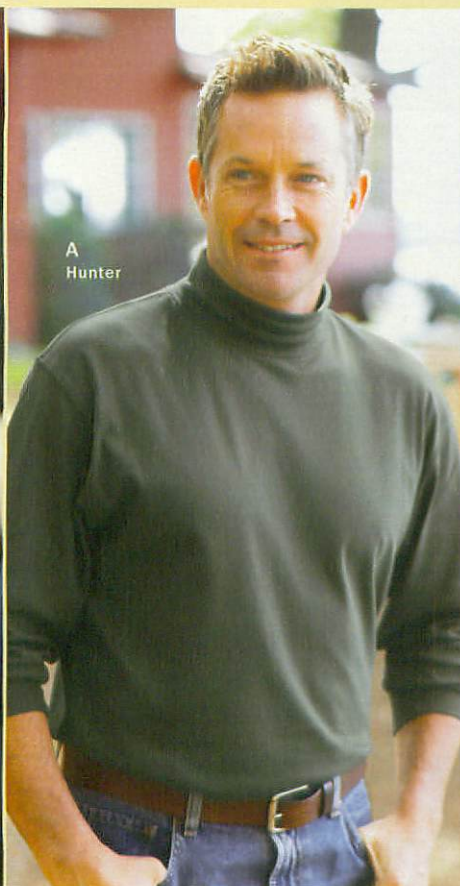
GG59128 \$34.50



“Soft and warm, and the price was incredible. Great deal, great shirt.”



lbean.com customer, Akron, OH



WOMEN'S
Blue Iris

White

Sugarplum

Rose Pink

Otter Brown

Hemlock

Cream

Crystal Blue

Navy

Deep Red

Black

Bean's Mock-Turtlenecks and Turtlenecks

A-D. For Men and Women Our customers rave about the softness and comfort, and our field testers can't stop talking about the durability—but they all agree that these are the best turtlenecks around. The naturally wrinkle-resistant interlock fabric, knit from premium combed cotton, feels substantial and won't shrink through repeated washings. The fit is comfortable, without the constrictive feel of "seamless neck" turtlenecks. Sturdy double-needle stitching at the shoulders adds durability. Printed label for added comfort. Imported. Machine wash and dry.

Men's

Colors Dark Plum. Hunter. Cream. Bright Mariner. Navy. Charcoal Heather. White. Deep Red. Black.
Sizes Regular S, M, L, XL, XXL. Tall M to XXL.

A. MOCK-TURTLENECK GG49393

REG \$15.95 TALL \$20.95

B. TURTLENECK GG49394

REG \$15.95 TALL \$20.95

Women's

Proportioned for a woman's figure. Slightly shaped sides make tucking in neat and comfortable. **Fit** Relaxed fit. Fall at hip. **Colors** Blue Iris. White. Sugarplum. Rose Pink. Otter Brown. Hemlock. Cream. Crystal Blue. Navy. Deep Red. Black. **Sizes** XS, S, M, L, XL.

C. MOCK-TURTLENECK GG35493 \$15.95

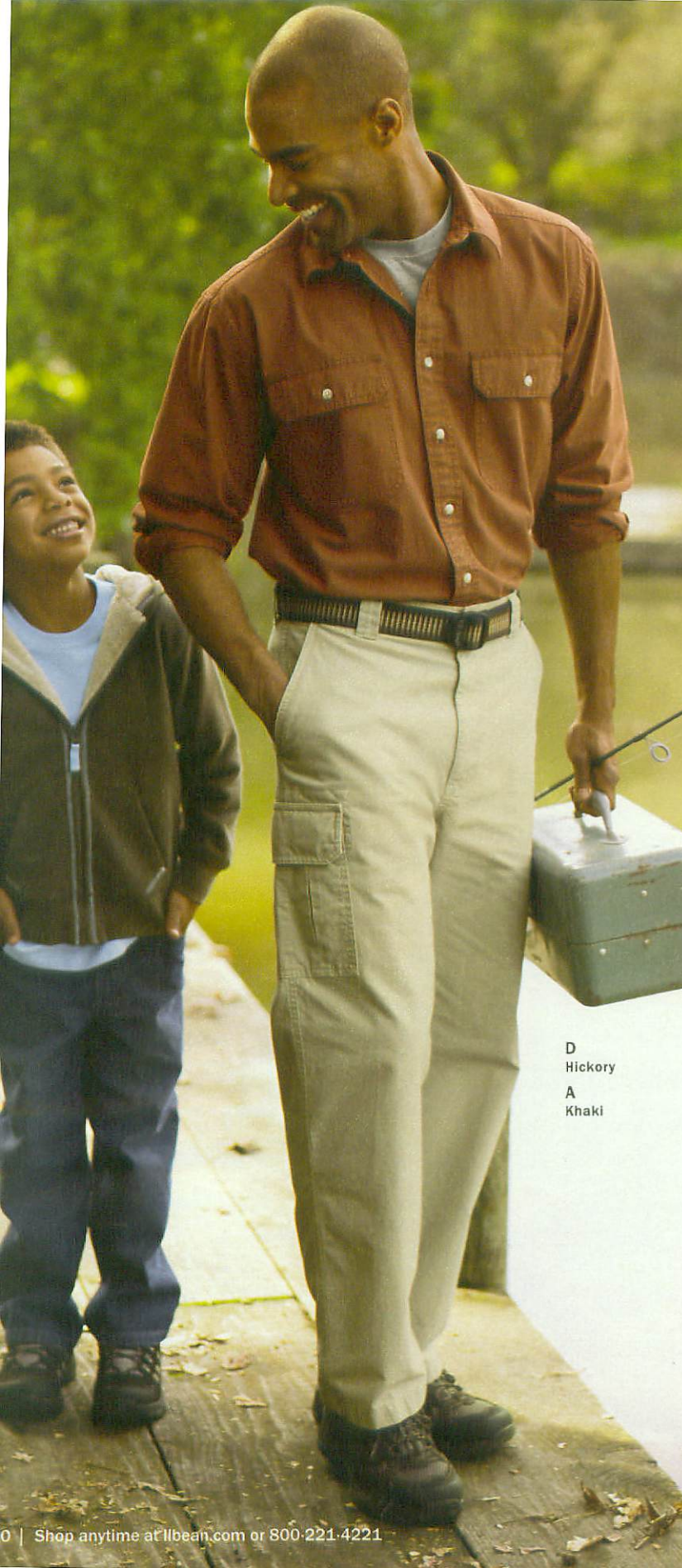
D. TURTLENECK GG35492 \$15.95

B
Charcoal
Heather

C
Crystal
Blue

Bean's
Turtlenecks
starting at

\$15⁹⁵



Bean's Tropic-Weight Cargo Pants

A, B. Made of lightweight, breathable 6 oz. cotton fabric, these pants are garment-washed to feel comfortably broken-in. Pigment-dyed for rich color that weathers gradually. Natural Fit is relaxed through the hips and thighs. Front quarter pockets, two back flap pockets and roomy cargo pockets on legs. Double-needle stitching at stress seams. **Fit** belts up to 1 $\frac{1}{4}$ "W. Imported. Machine wash and dry. **Colors** Shown below.

Sizes Waist: Even 30 to 46, plus 31, 33, 35, 37. Inseams: 29", 30", 32", 34", 36".

A. REGULAR WAIST GG36629 \$44
B. COMFORT WAIST GG36630 \$46



COMFORT WAIST

Features subtle elastic back for all-day comfort.



D
Hickory
A
Khaki

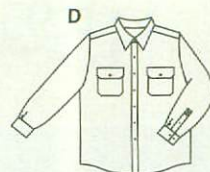
Sunwashed Canvas Shirts

C, D. Our popular Sunwashed Canvas Shirts are made of a softer cloth for a relaxed, broken-in feel right from the start. Finished in France, the cotton fabric is washed to weather the rich colors and to add softness without losing the rugged, durable character of canvas. Back box pleat lets you move freely. Seams have durable double-needle stitching. Shirttail hem. Imported. Machine wash and dry. **Colors** Shown opposite.

Sizes Regular S, M, L, XL, XXL. Tall M to XXL.

C. SHORT-SLEEVE
GG25124 REG \$29.50 TALL \$34.50

D. LONG-SLEEVE
GG51879 REG \$34.50 TALL \$39.50



TRACK YOUR ORDER

It's easy to find out when your order will arrive.



ilbean.com/trackorders



“Excellent quality, washes beautifully
and wears forever.”

Beth W., llbean.com customer, Camden, DE

C, D
Stone

Bay Blue

Bluestone

Sage

Baked Clay

Hickory

Deep Loden

Juniper

CLASSIC FIT

Our trimmest, with straight legs.

NATURAL FIT

Relaxed through hips and thighs.



“Best value in jeans
anywhere.”



llbean.com customer, Surprise, AZ. Read more customer reviews online.

**RELAXED FIT**

Our loosest fit, with the most room from the seat through the knees.

NATURAL FIT FLANNEL-LINED**SAME GREAT PRICE SINCE 1995****Double L Jeans**

A-C. Our Double L® Jeans offer unbeatable quality, a consistent fit and long-lasting durability—pair after pair. Made of traditional heavyweight cotton denim and prewashed for softness and shrinkage control. Our classic five-pocket design comes in a variety of fits, so it's easy to choose the one that's right for you. Double-needle stitching, bar-tacking and rivets at stress points for durability. Available lined with your choice of brushed cotton flannel or polyester fleece for extra warmth. Fit belts up to 1½"W. 13.5 oz. fabric. Imported. Machine wash and dry. **Colors** Unlined: Black (Classic). Faded. Stonewashed. Dark Wash. Khaki. Lined: Stonewashed. Khaki.

Sizes Waist: Even 30 to 46, plus 31, 33, 35, 37. Inseams: 29", 30", 32", 34", 36".

A. Classic Fit

Unlined	GG50170	\$29.95
Flannel-Lined	GG24563	\$49.95
Fleece-Lined	GG23549	\$49.95

B. Natural Fit

Unlined	GG50171	\$29.95
Flannel-Lined	GG24566	\$49.95
Hidden Comfort		
Unlined	GG57121	\$34.95
Comfort Waist (view online)		
Flannel-Lined	GG46443	\$49.95

C. Relaxed Fit

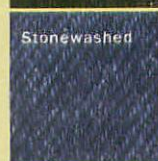
Unlined	GG50172	\$29.95
Flannel-Lined	GG23550	\$49.95
Fleece-Lined	GG35944	\$49.95

**HIDDEN COMFORT**

Hidden elastic panels at waist for all-day comfort.

Black
(Classic)

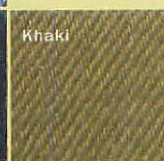
Faded



Stonewashed



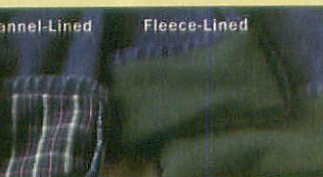
Dark Wash



Khaki



Flannel-Lined



Fleece-Lined

Nearly indestructible— with a warm flannel lining

D

Dark Khaki

Loden

Navy

Mountain
Red

Bean's Hurricane Cloth Shirt

D. Our brawny twill shirt is water resistant for comfort on drizzly days and oil resistant to help it repel stains. The heavy-duty 6 oz. cotton fabric is also wind resistant and breathable. These qualities—coupled with exceptional warmth—make this shirt a great choice for backyard chores or cool-weather walks. Prewashed to a well-worn softness, it looks and feels like you've owned it for years. Hidden beneath the rugged exterior is a warm layer of 4.2 oz. cotton flannel. Sturdy triple-needle stitching. Button-flap pockets. Shirttail hem. Imported. Machine wash and dry. **Colors** Shown at left.

Sizes Regular S, M, L, XL, XXL. Tall M to XXL.
GG55881 REG \$54.95 TALL \$59.95

Simply the best you can buy anywhere



llbean.com customer, Ashburn, VA. Read more customer reviews online.

A

Swan

Lindsay

O'Farrell

Scott

Dress
Forbes

Black
Watch



SAME GREAT PRICE SINCE 1998

Scotch Plaid Flannel Shirt

A. We use high-quality Portuguese cotton flannel that's found only at L.L.Bean and has been expertly brushed for softness and warmth. Choose from six authentic Scottish tartans, yarn-dyed so the patterns stay clear through many washings. Comfortably roomy fit, with center back pleat for ease of movement. Button-down collar, single patch pocket and shirttail hem. Imported. Machine wash and dry. **Tartans** Lindsay. Swan. O'Farrell. Black Watch. Dress Forbes. Scott.

Sizes Regular S, M, L, XL, XXL. Tall M to XXL.
GG35142 REG \$29.50 TALL \$34.50